

Jan 27th 2023

St. Mary's

Church of England Primary School
Kirkby Lonsdale



Y5 Art - Jan 25th 2023



HOLOCAUST
MEMORIAL
DAY 27/1

Newsletter

Nurturing creative thinkers

Honesty



Trust



Responsibility



Perseverance



Respect



Ofsted
Good School

2017

THE CHURCH
OF ENGLAND
OUTSTANDING

Dear Parents,

Ofsted Visit

This has been a very interesting week for our school as we had the additional involvement of an Ofsted Inspection. Thank you to everyone who contributed to the Parent View questionnaire and conveyed your views to the inspector.

We will not see the final report until it is published in a few weeks and when it has been confirmed and quality assured; we will send you a copy of the report when it is issued. This is likely to take place in about 3-4 weeks. This is often a frustrating period of time for all of us as we wait to see the final wording. However, we are really looking forward to sharing this with you as soon as possible.

Thank you to all involved in working and communicating with the inspector and to our children who were honest, confident and articulate throughout – we have super children in our school.

My Bike Buddies – Year 1 and 2



As we look to next week, we have some very exciting events taking place, My Bike Buddies are in school on Tuesday for Year 1 and 2.

These sessions are superb for confidence building and ensuring our children develop new skills and extend their experiences with their friends.

Young Voices



We also have our choir going to Young Voices. Thank you to everyone supporting and going to Manchester. It is a delight to see so many children taking part (nearly a quarter of the school) singing together.

Art

Bob Sutcliffe OBE joins us each week to inspire our children creatively in art and it is amazing to see the work our children are producing.

If you would like to find out about his art courses for adults and children and see examples of his work – please follow this link:

Honesty



Trust



Responsibility



Perseverance

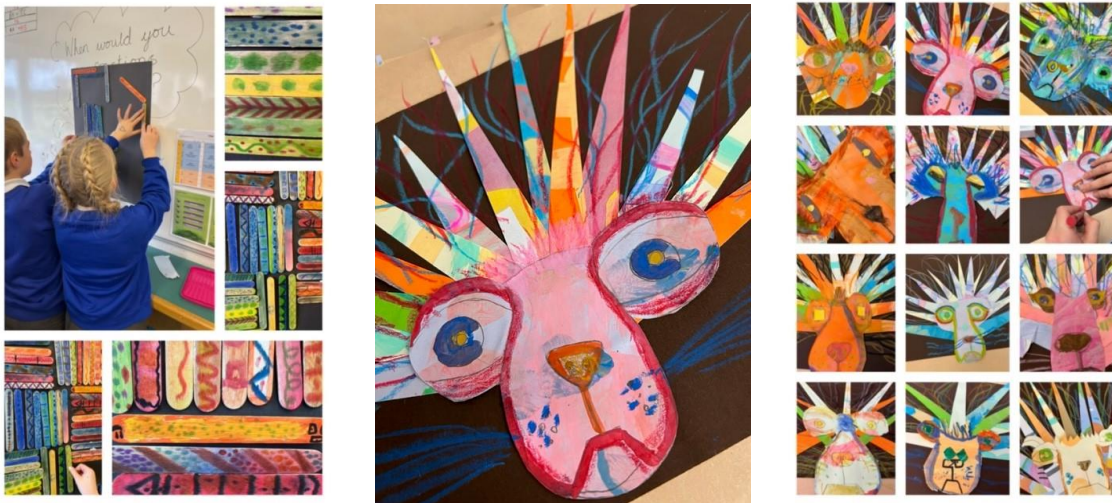


Respect



<https://www.bobonpaintings.com/shop?category=Courses>

This week our children in Year 5 created some very special collages building on their previous learning.



Please get in touch with Jana Hopton, if you would like your child to take part in her weekly art club.


ART & CRAFT
 After School Club
 Every Tuesday during school term
 3.15pm to 4.15pm
 Starting 1st November 2022
 For children in Years 3, 4, 5 and 6
 St Mary's Primary School, Kirkby Lonsdale

£6 per lesson paid as a block
 1 Nov to 18 Dec 2022 (7 weeks) £42
 10 Jan to 14 Feb 2023 (6 weeks) £36
 28 Feb to 28 Mar 2023 (5 weeks) £30
 18 Apr to 23 May 2023 (6 weeks) £36
 6 Jun to 18 Jul 2023 (7 weeks) £42
 Snack included

- painting
- origami
- collage
- decoupage
- papier mâché
- teddy making
- crafts
- key rings
- drawing

For more information contact 07591 494 103 (Jana Hopton) stripycatart@hotmail.com
 Places are first come first served. If you would like a place for your child, please return the slip below to the school office. If there is space for your child we'll email you with payment details. Payment secures your place.

I would like my child to attend the Arts & Crafts club.
 Child's Name Year Group
 Parent/Guardian Name Signature
 Phone Number Email
 Other information such as medical Conditions/Allergies

Annual Spelling Challenge

If a child (or adult) struggles with spelling, it is often essential to get creative when learning spellings to find a way for learning to stick. Spellings are so important, despite the many supports eg spell check that we have now. If a child finds spellings challenging, they generally have to work diversely and creatively to learn spellings to ensure they learn essential words.

With our spelling bee coming up, children may want to explore a range of artistic and memorable ways to explore spellings. Here are some suggestions below:



Honesty

Trust

Responsibility

Perseverance

Respect





Honesty



Trust



Responsibility



Perseverance



Respect

