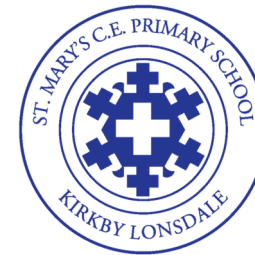


Prospectus 2018



St. Mary's

Church of England Primary School
Kirkby Lonsdale

Headteacher's Welcome

A warm welcome to St Mary's CE School.

It is a great privilege to welcome you to our school on behalf of the children, staff and governors. We are a caring school that welcomes all children and their families. The decisions we make are rooted in Christian values and are child focused. Our intention is to ensure our children achieve and reach their academic potential.

The opportunities we provide ensure our children receive a rich experience and are challenged to develop their thinking skills and independence which will help them to embrace the many opportunities in the future. This dovetails with an awareness of the children's contribution in the local and wider community.

This prospectus provides only a snap shot of our school and our website, offers more depth. However please do come and visit our school to appreciate the school in action.

Nurturing creative thinkers



A long tradition of education ...

Since 1856 starting with the Subscription School then becoming the National School in 1858, there has been a long history of quality education in Kirkby Lonsdale. At this time there was a boys, girls and infants school and in 1922 these merged to become the Kirby Lonsdale National School. The 1970s saw the closure of many neighbouring local village schools. Eventually with increasing numbers at the National School, plans were put in place to build a new building. In 1986 the headteacher of the National School, Mr D Dixon, made the transition to what is now St Mary's Church of England School.

There has clearly been a long history of teaching and learning in Kirkby Lonsdale despite the current building being 30 years old. Whilst we recently celebrated our 30th anniversary with Bishop James, we were actually also celebrating 160 years of the school's history in our superb town of Kirkby Lonsdale. This year our children planted fruit trees in our garden to remember Mr Dennis Dixon the first headteacher of St Marys and the last headteacher of the National School. As we reflect upon the past and the school's heritage we continue to look to the future and enabling our children to be prepared for their future in an ever changing world.



Starting at St Mary's

Starting school is a very special time and like other transitions, we make every effort to ensure this is a smooth and positive time. For pupils starting school in Reception we invite pupils to join us for visit days in the summer term. We also have a move up day in which children have another opportunity to visit school and continue to make friends and find their way around. For new children starting in reception, we ensure all pupils have a Year 6 buddy to look after the children. Our Buddies provide the children with support at breaks and lunchtime and this establishes a long lasting relationship for the future. We also try to create a structured and smooth start to the year.

For those children who are new to school e.g. Nursery and join us at a different time, we appreciate starting a new school is equally important. We make every effort to ensure children settle into school and support them.

Support continues throughout their first few weeks so we get to know the children as soon and as much as possible. Staff will ensure they have an informal meeting with parents within the first week to discuss the start to school and answer any questions. It is very important to us that your child feels a part of our school family as soon as possible.



Inspiring our Children

We believe that children at St Marys should develop a love of learning that will last a lifetime. We offer pupils a friendly and safe atmosphere with an emphasis on success and achievement. We encourage our children to enjoy the wealth of opportunities provided for their moral and personal development. All children are valued equally and we match the learning needs of each child with teaching strategies that promote success.

Pupils are highly considerate and respectful towards adults and each other. We help to develop the children's self-confidence and self esteem so that they mature emotionally, spiritually, socially and personally. We place great emphasis on courtesy, respecting others and developing great expectations. Whilst focusing on academic achievement, we are known for providing good personal development and creativity. We endeavour to balance the rigours of study with the fun of having good friends and learning together.

Academic and creative achievement and attainment is vital alongside physical development. We encourage children to fully embrace a range of opportunities to participate in team games as well as discover and celebrate individual talents and skills.

We make great use of our superb school grounds to ensure our children are given every opportunity to experience high quality physical education and competitive opportunities. We value outdoor experiences and make every effort to provide superb residential and day visits as well as maximising our outdoor spaces and local environment to support learning in all subjects.





Nurturing creative thinkers

Distinctive

As a Church of England School we aim to ensure excellence in our RE teaching as well as all of the other aspects of the curriculum. Both Ofsted and SIAS inspections highlighted the excellent quality of education provided at St Marys. They also noted the outstanding distinctive Christian character of the school. As a school we are committed to understanding the Christian faith but, also and importantly, learning about and from other faiths enabling a respect for those with and without faith.

We also recognise how this impacts on the spiritual, moral, social and cultural development of the children. We not only explore the Christian faith but reflect on demonstrating this in our lives. Importantly we recognise the importance British Values can play on developing our children's understanding of themselves, their community and our diversely rich country.



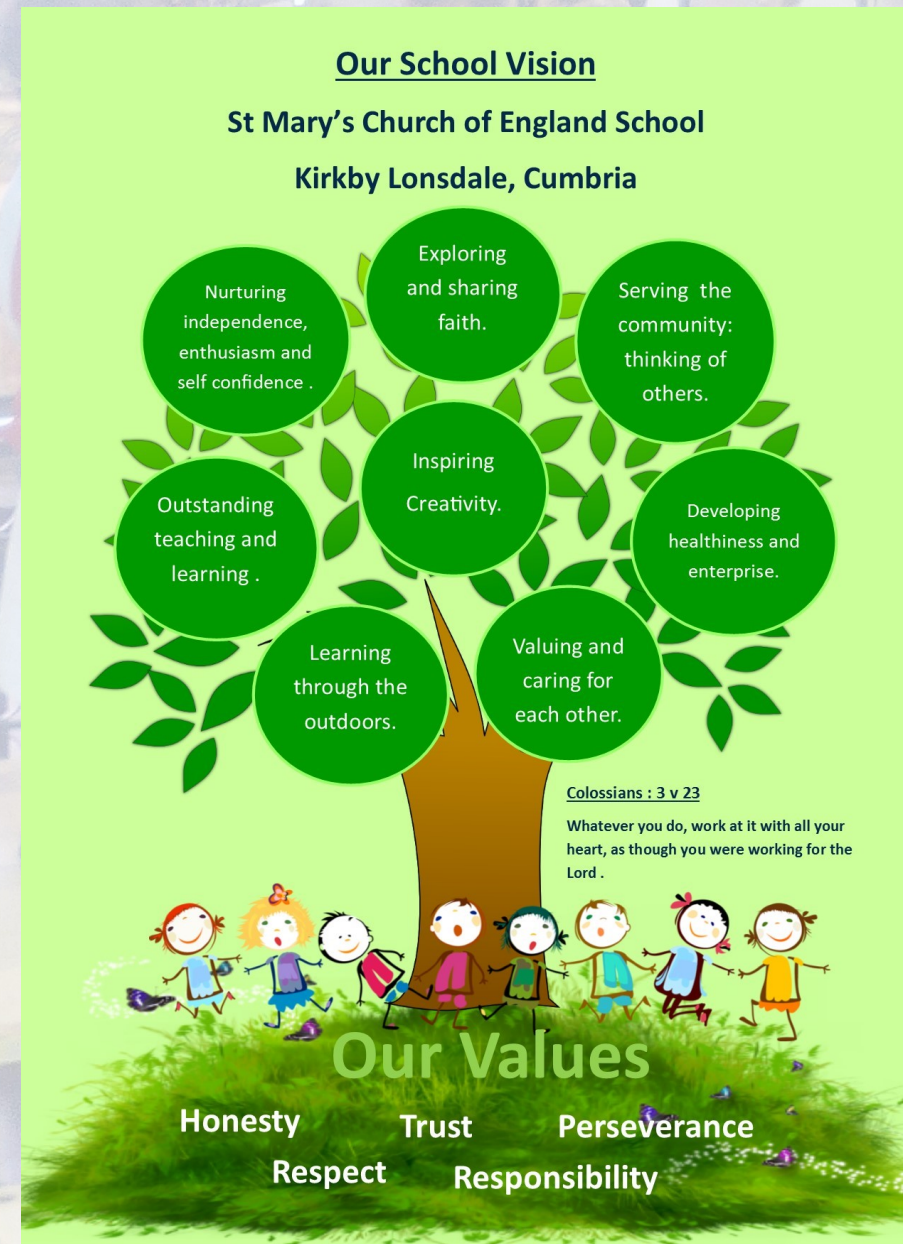
Our Values

We have five core Christian values which act as a thread woven into everything we do. These have been developed with the whole school community.

These are: Trust, Honesty, Respect, Responsibility and perseverance.

It is important to uphold British values in our school. We are proactive in enabling our children to explore differing cultures and exploring diversity through varying experiences.. We have a partnership with a Church of England school in a more urban setting of Rochdale. St Peter's school visit our town and we explore their school and local area building a strong friendship each year.

The author of the Book of Proverbs says, "Intelligent people are always open to new ideas; in fact, they look for them" (Proverbs 18:15) We also encourage creativity and encourage children to learn in different ways enabling them to develop a range of learning styles and communicate learning in different ways.



V.I.Ps

One very special feature of our school is our VIP system. Each week one child from each class is randomly chosen to be a VIP. We believe it is important to celebrate each child in our school for who they are and what they bring to our community. To do this we provide them with a different coloured polo top (yellow) and for their chosen week, they receive additional privileges. On Fridays we invite the VIP's family and friends to join us as the Year six pupils read out the many wonderful things the children think about the VIPs, which is captured on their VIP certificate. All children will be a VIP at some point within the academic year. The process is repeated every year.



Positive Atmosphere

The school rules are designed to create a safe and positive atmosphere in which all children can feel secure and learn. These rules are agreed by our staff to ensure consistency in our messages and rewards. class rules are also negotiated with the pupils. We encourage and reward our children for good behaviour and effort. We aim to foster values of caring for each other and to encourage children to reflect on the consequences of their actions. Most children achieve high standards of self discipline but naturally some need more support and encouragement than others. If children do not behave acceptably we take extra care to involve parents in encouraging and praising children's efforts to conform to school rules. Sometimes we need to impose sanctions to emphasise the unacceptability of inappropriate behaviour. We always keep parents informed about school discipline issues.

Challenge and Support

Releasing potential and supporting able pupils. Ensuring high quality learning support. We value every child as an individual along with excellence and personal achievement. Class teachers ensure that their delivery of the curriculum is differentiated to ensure that more able children are challenged.

We, of course, recognise that some children have special abilities and that nurturing these is our responsibility. The first step in meeting children's requirements is to identify their particular talents and to review the children's development needs as well as their strengths. We aim to ensure that we foster their intellectual, personal, social, emotional and physical development.

We take every opportunity to nurture each child's abilities and talents both in school and out of school, ensuring every opportunity is made to unlock and develop children's special abilities. As children develop differently, some experience more difficulty with learning, behaviour or physical tasks than others. Such children receive continuous support and assistance with their progress. We are proud of our support programmes for children with Special Educational Needs (SEN).

The general classroom curriculum is differentiated. This ensures all children have the opportunities to succeed and consolidate learning. All children have individual targets set for them on a regular basis. Further to these, targets may be set on Individual Educational Programmes which form a focus for staff in order to help specific children make progress.

We offer a range of small group work supported by specialist staff, often in the classroom, but sometimes in quiet areas, helping children to concentrate with minimal distraction. It is our experience that children with SEN progress best when there is a strong partnership between home and school. We encourage parents to take an active role in helping with learning tasks at home. Regular meetings are held to ensure good communication and ensuring home and school dovetails to support children.



Sport

We are keen to enable children to find a sport they excel in or enjoy. Whether at a competitive level or for enjoyment we offer a range of opportunities to participate. Many children will take part in inter house competitions and where possible inter school. Many of our children are involved in sport often being members of local clubs. We ensure children have 2 hours of sport per week as well as after school opportunities. Pupils typically take part in, tag rugby, hockey, cross country, netball, football, bowling, athletics, golf, judo, swimming as well as various others sports both indoor and outdoor.

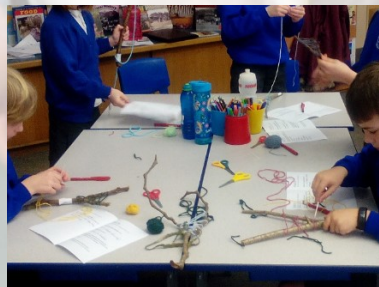


The Arts

At Harvest all of our children contribute to the harvest festival whether reading poetry, singing or performing. At Christmas our Reception children take part in a wonderful Nativity in church starting their acting careers.. Our older pupils all contribute to our candle lit service sharing funny, poignant and quite creative ways to explore Christmas. At Easter various classes have performed a dramatic retelling of the Easter story. At the end of the year our infants and juniors perform two wonderful shows celebrating their talents and entertaining the school community. These become the highlight of the summer term and provide the platforms for stars to be born!

In addition, during the year, all of our children have the chance to explore their creativity, through dance or drama.. Equally they take part in termly home learning projects to explore topics exploring their preferred learning style. We also encourage creativity through theme weeks, special days and events. Collectively the children also work on a display for the Westmorland Show, local arts festivals as well as within school.

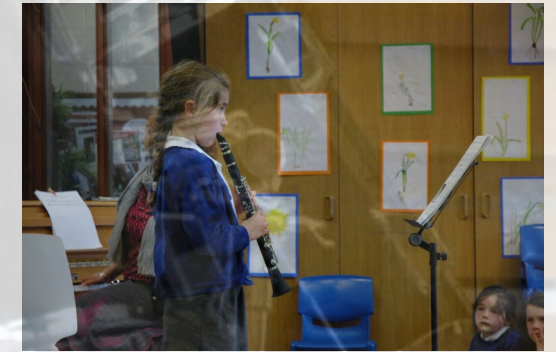
During the year we have various arts clubs for all ages in school.



Music

We hope to provide a balanced curriculum which includes musical experiences and tuition. Many pupils participate in lessons in addition to the curriculum.

To celebrate the wide ranging diversity of musical talent we hold three music concerts a year in addition to the various plays and services in the academic year. This allows pupils to showcase their talents and progress which builds their confidence.



Outdoor Learning



Central to our curriculum are the various residential and day visits to different centres and locations in the Lake District. Pupils have the chance to get away and discover skills and experiences away from their family. Not only do these provide memories the children will never forget, but they return more mature, independent and confident. They may have faced challenges never experienced before and together they have an exceptional time taking risks and discovering a little more about themselves. These special moments also cement friendships and develop leadership skills and it helps our children understand what it means to be part of a team.



Before and After School

We feel it is important to provide care before and after school.

Breakfast Club

Our Breakfast Club runs everyday from 7:30am until 8:30am. We supply a variety of healthy food options. This club is run by our staff who work hard to make sure our children receive a substantial breakfast to enable them to start the school day.

After School Club

Our after school club provides children with a superb opportunity to relax and enjoy each others company at the end of the day. This runs from 3:15pm to 6:00pm, Monday to Friday.

If you would like your child to participate in either or both of these clubs please contact the school office for costs and details.

Uniform

Uniform:

Our school uniform is available from the school office. We also order uniform on a termly basis if you require additional uniform throughout the year.

Our preferred school uniform is:

School Jumper /cardigan – available through the school office

**Nursery children are not required to wear this, but they can if parents wish.*

- White shirt or Polo Top
- Blue checked gingham dresses or dark grey/navy pinafore dresses can be worn by girls in summer
- Black or dark grey trousers or grey/black formal shorts (Boys)
- Black or dark grey trousers or skirt (Girls)
- Black shoes – not trainers or coloured shoes

Our school PE kit is a white T shirt and black shorts.



The School Day

Nursery

Currently:

30 hours provision:

8:45am — 3:30pm with and lunch club.

15 hours provision:

8:45am — 11:45am with extended services and lunch club

Infants

8:45

Registration

10:30

Break

12:00

Lunch

1:00

Afternoon Session 1

1:55-2:10

Break

2:10

Afternoon Session 2

2:50

Worship time

3:10

End of day

Juniors

8:40

Registration

10:30

Break

12:00

Lunch

1:00

Afternoon Session 1

2:00

Afternoon Session 2

2:50

Worship time

3:15

End of day

Our Teachers



Mrs Winnard
PE Subject Lead



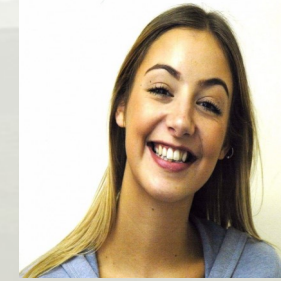
Mrs Hutchinson
History Subject Lead



Miss Cook
PSHE Subject Lead



Mrs Jamieson
English Subject Lead
Deputy Headteacher



Miss White
Maths Subject Lead



Mrs Smith
Science and DT
Subject Lead



Mrs Day
Art and Design
Subject Lead



Mrs Neale
French
Subject Lead



Miss Loy
Music
Subject Lead
SENDCo



Mr Yates
Geography
Subject Lead

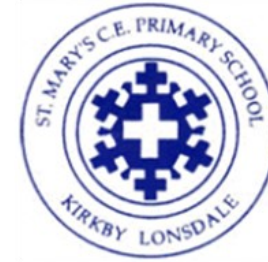


Mr Bromley
Computing Subject Lead
Deputy Headteacher

Nurturing creative thinkers . . .



Contact Information



St. Mary's

Church of England Primary School

Kendal Rd,
Kirkby Lonsdale,
Carnforth, Cumbria
LA6 2DN

Tel. 015242 71334

Email: admin@stmarys-kl.cumbria.sch.uk